

**ECONOMIC
INDICATORS**

NEW SOUTH WALES

EMBARGO: 11:30AM (CANBERRA TIME) MON 16 FEB 1998

C O N T E N T S

	<i>page</i>
Notes	2
NSW Overview	3
Main features	4
List of tables and graphs	5
Population	6
Labour	7
Production	10
Building	11
Retail trade	12
New motor vehicle registrations	13
Tourism	14
Consumer and producer price indexes	15
Finance	16
State Government finance	17
Investment	18
Foreign trade	19

I N Q U I R I E S

- For further information about these and related statistics, contact Bill Markham on Sydney (02) 9268 4376 or e-mail at bill.markham@abs.gov.au or contact any ABS office. For information about other ABS statistics and services, refer to the back cover of this publication.

NOTES

GENERAL

This publication has been enhanced to incorporate relevant data from the now discontinued publication *Monthly Summary of Statistics, NSW* (Cat. no. 1305.1) (final edition December 1997).

This enhanced publication provides information on a wide range of economic indicators which are the latest available at the time of publication. In a number of cases, figures appearing in this summary are preliminary and are subject to revision in subsequent issues.

SEASONAL ADJUSTMENT AND TREND ESTIMATION

Seasonal adjustment is a means of removing the estimated effects of normal seasonal variation from a series so that the effects of other variations on that series can be more clearly recognised. Seasonal adjustment does not aim to remove the irregular or non-seasonal influences which may be present. This means that movements of seasonally adjusted estimates may not be reliable indicators of trend behaviour. Smoothing seasonally adjusted series produces a measure of the underlying trend by reducing the impact of the irregular component of the series. This smoothing technique does result in revisions to the most recent estimates as additional observations become available. For an explanation of seasonal adjustment derivation, refer to the publication *Seasonally Adjusted Indicators* (Cat. no. 1308.0).

STANDARD ERRORS OF ESTIMATES

One measure of the variability which occurs as a result of surveying only samples of the total business population is the standard error. There are about two chances in three that a survey estimate is within one standard error of the figure that would have been obtained if all businesses had been included, and about 19 chances in 20 that it is within two standard errors. The standard error can also be expressed as a percentage of the estimate and this is known as the relative standard error (RSE).

For detailed explanatory notes and definitions for the items shown in this publication, readers are referred to the specific ABS publications.

Current publications produced by the ABS are listed in the *Catalogue of Publications* (Cat. no. 1101.0). A *Release Advice* (Cat. no. 1105.0) is issued on Tuesdays and Fridays which lists publications to be released in the next few days. These publications are available from any ABS office.

SYMBOLS AND OTHER USAGES

.....

kWh	kilowatt hour
teraJ	terajoule
n.a.	not available
n.p.	not available for publication but included in totals where applicable
n.y.a	not yet available
r	figure or series revised since previous issue
..	not applicable
—	nil or rounded to zero
—	break in continuity of series (where a line is drawn across a column between two consecutive figures)

Gregory W. Bray
Regional Director
New South Wales

NSW OVERVIEW

EMPLOYMENT

Employment rose slightly by 0.1% in NSW in December 1997 to a seasonally adjusted figure of 2,842,300. National employment decreased by 0.1% over the same period.

UNEMPLOYMENT

Seasonally adjusted unemployment fell by 5.8% in December 1997 to 224,600. The unemployment rate in NSW was 7.3% in December 1997, down from 7.7% the previous month. The national unemployment rate was 8.1% in December 1997.

NEW MOTOR VEHICLE REGISTRATIONS

In seasonally adjusted terms, new motor vehicle registrations in NSW decreased by 0.7% from 21,650 in October 1997 to 21,507 in November 1997.

BUILDING APPROVALS

The seasonally adjusted number of new dwelling units approved in NSW in November 1997 was 4,507, an increase of 9.6% on the previous month and 13.1% higher than in November 1996.

RETAIL

In seasonally adjusted terms, total retail sales for NSW in November 1997 was \$3,961.5 million, an increase of 0.2% compared to the previous month.

FINANCE

The value of housing finance commitments for owner occupation in November 1997 was \$1,771.4 million, down 6.3% from the previous month. However, there has been a 9.7% increase on November 1996.

MAIN FEATURES

RETAIL

In November 1997, seasonally adjusted total retail sales for NSW was \$3,961.5 million. This represented a slight increase (0.2%) on the previous month's figure of \$3,953.4 million. When compared to November 1996 the increase was more substantial at 3.3%.

Of all retail industry groups, the Food retailing group (\$1,536.7 million) made the largest contribution (38.8%) to total retail sales. Hospitality and services followed with a contribution of 19.4%. While the figures for most retail industry groups showed increases on the previous month, Household goods retailing and Recreational goods retailing declined.

Nationally, total seasonally adjusted retail sales in November 1997 was \$11,241.1 million, an increase of 0.8% on the previous month and 5.7% on November 1996. For NSW, Food retailing made the largest contribution (40.4%) to total retail sales at the national level. Retail sales for NSW represented 35.2% of total national retail sales.

FINANCE

The seasonally adjusted estimate for the value of housing finance commitments in NSW was \$1,804.5 million in November 1997, a fall of 4.2% from October. This was the first fall in this series since July 1997, although it is 13.1% higher than in November 1996.

In original terms, there was a fall in all components of housing finance for NSW. The value of finance approved for the construction of dwellings fell 10.2% to \$201.1 million, the purchase of newly erected dwellings was down 0.7% to \$110.0 million and commitments for the purchase of established dwellings decreased 4.3% to \$1,198.4 million. The refinancing of existing dwellings also fell 13.4% to \$261.8 million.

The average borrowing size in NSW in November 1997 was \$140,300. This is up by 11.6% from the average of \$125,700 twelve months earlier.

Nationally, the seasonally adjusted value of commitments fell by 2.3% to \$4,533.7 million in November 1997, the first fall in the national series since July 1997. However, this is 14.9% higher than in November 1996.

LIST OF TABLES AND GRAPHS

Page

POPULATION

- 1** Estimated resident population, NSW 6

LABOUR

- 2** Labour data, latest time period, NSW and Australia 7
3 Labour data, time series, NSW 7
4 Labour force status of the civilian population, NSW 8
5 Graph: Unemployment rates, NSW and Australia 9

PRODUCTION

- 6** Coal, electricity and gas production, latest time period, NSW and Australia . . 10
7 Coal, electricity and gas production, time series, NSW 10

BUILDING

- 8** Building approvals, latest time period, NSW and Australia 11
9 Building approvals, time series, NSW 11

RETAIL TRADE

- 10** Turnover of retail establishments, latest time period, NSW and Australia 12
11 Turnover of retail establishments, time series, NSW 12

NEW MOTOR VEHICLE REGISTRATIONS

- 12** New motor vehicle registrations, latest time period, NSW and Australia 13
13 New motor vehicle registrations, time series, NSW 13

TOURISM

- 14** Licensed hotels, motels etc., latest time period, NSW and Australia 14
15 Licensed hotels, motels etc., time series, Sydney and NSW 14
16 Graph: Licensed hotels, motels etc., quarterly room nights occupied,
 Sydney and balance of NSW 14

CONSUMER AND PRODUCER PRICE INDEXES

- 17** Consumer and producer price indexes, latest time period,
 NSW and Australia 15
18 Consumer and producer price indexes, time series, NSW 15
19 Graph: Consumer Price Index, Sydney and average of 8 capital cities 15

HOUSING FINANCE

- 20** Finance commitments, latest time period, NSW and Australia 16
21 Finance commitments, time series, NSW 16

STATE GOVERNMENT FINANCE

- 22** Government finance, budget sector, time series, NSW 17

INVESTMENT

- 23** Actual private new fixed capital expenditure, latest time period,
 NSW and Australia 18
24 Actual private new fixed capital expenditure, time series, NSW 18
25 Graph: Actual private new fixed capital expenditure, NSW 18

FOREIGN TRADE

- 26** Imports and exports, latest time period, NSW and Australia 19
27 Imports and exports, time series, NSW 19

1

ESTIMATED RESIDENT POPULATION, NSW(a)

Period	Estimated resident population at end of period			Increase during period			Mean estimated resident population for year ended	
	Males '000	Females '000	Persons '000	Natural increase(b) '000	Net estimated migration '000	Total increase(c) '000	30 June '000	31 December '000
1994	3 026.8	3 063.5	6 090.3	42.8	13.2	57.5	6 034.9	6 064.0
1995	3 064.0	3 104.8	6 168.8	42.0	33.7	78.6	6 093.2	6 128.0
1996	3 098.2	3 142.6	6 240.9	40.6	29.3	72.1	6 167.2	6 204.2
1996								
March qtr	3 072.3	3 114.1	6 186.4	10.9	5.6	17.6
June qtr	3 081.0	3 123.7	6 204.7	9.8	7.5	18.3
September qtr	3 089.1	3 132.3	6 221.4	8.8	7.9	16.6
December qtr	3 098.2	3 142.6	6 240.9	11.1	8.4	19.5
1997								
March qtr	3 108.6	3 152.6	6 261.3	11.4	9.0	20.4
June qtr	3 115.3	3 159.0	6 274.4	11.0	2.1	13.1

^a Most figures in this table have been revised since the previous issue.

^b Excess of live births over deaths.

^c For dates prior to June 1996, differences between the total increase shown and the sum of the natural increase and net estimated migration arise from retrospective adjustments to population estimates (which are made after each Census) to compensate for any intercensal discrepancy. A description of intercensal discrepancy is contained in the ABS information paper Demographic Estimates: Concepts, Sources and Methods (Cat. no. 3228.0).

Source: Australian Demographic Statistics (Cat. no. 3101.0)

2

LABOUR, NSW AND AUSTRALIA

Indicator	Unit	Latest period	New South Wales			Australia		
			Latest figure	Change from prior period	Change from same period prior year	Latest figure	Change from prior period	Change from same period prior year
				%	%		%	%
Employed persons (seasonally adjusted)	'000	Dec 97	2 842.3	0.1	0.8	8 515.2	-0.1	1.4
Unemployed persons (seasonally adjusted)	'000	Dec 97	224.6	-5.8	-5.7	753.2	-3.3	-4.9
Labour force (seasonally adjusted)	'000	Dec 97	3 066.9	-0.3	0.3	9 268.4	-0.3	0.9
Participation rate (seasonally adjusted)	%	Dec 97	61.8	-0.5	-1.0	63.2	-0.5	-0.5
Unemployment rate (seasonally adjusted)	%	Dec 97	7.3	-5.5	-6.0	8.1	-3.0	-5.7
Industrial disputes—working days lost	'000	Oct 97	28.0	21.7	300.0	90.1	73.6	162.7
Job vacancies	'000	Nov 97	22.8	18.1	-10.7	68.1	-1.7	9.3
Average weekly employee earnings—full-time adult ordinary time earnings (seasonally adjusted)	\$	Aug 97	732.4	1.5	2.5	708.7	1.9	4.4

Source: Labour Force, Australia, Preliminary (Cat. no. 6202.0), Job Vacancies and Overtime, Australia (Cat. no. 6354.0), Industrial Disputes, Australia (6321.0), Average Weekly Earnings, States and Australia (Cat. no. 6302.0)

3

LABOUR, NSW

Period	Seasonally adjusted						
	Employed persons '000	Unemployed persons '000	Labour force '000	Participation rate %	Unemployment rate %	Industrial disputes (working days lost) '000	Job vacancies '000
1996							
October	2 811.8	242.0	3 053.8	62.4	7.9	7.0	..
November	2 799.3	228.4	3 027.7	61.8	7.5	22.0	25.6
December	2 820.8	238.3	3 059.1	62.4	7.8	12.2	..
1997							
January	2 831.7	238.5	3 070.3	62.6	7.8	3.2	..
February	2 801.9	258.8	3 060.7	62.3	8.5	3.2	22.9
March	2 813.4	240.8	3 054.2	62.1	7.9	16.3	..
April	2 826.2	248.2	3 074.5	62.5	8.1	2.6	..
May	2 799.0	254.3	3 053.3	62.0	8.3	13.2	19.6
June	2 788.1	229.7	3 017.8	61.2	7.6	10.8	..
July	2 804.2	255.7	3 060.0	62.0	8.4	18.5	..
August	2 767.9	241.2	3 009.1	60.9	8.0	22.1	19.3
September	2 817.4	239.3	3 056.7	61.8	7.8	23.0	..
October	2 781.8	245.6	3 027.4	61.1	8.1	28.0	..
November	2 839.0	238.5	3 077.5	62.0	7.7	n.y.a.	22.8
December	2 842.3	224.6	3 066.9	61.8	7.3	n.y.a.	..

Source: Labour Force, Australia, Preliminary (Cat. no. 6202.0), Industrial Disputes, Australia (Cat. no. 6321.0)

4

LABOUR FORCE STATUS, NSW — ORIGINAL

Month	Employed		Unemployed		Labour force '000	Not in labour force '000	Civilian population aged 15 years and over '000	Unemployment rate(a) %	Participation rate(b) %
	Full-time workers '000	Total '000	Looking for full-time work '000	Total '000					
MALES									
December									
1993	1 356.8	1 503.4	183.5	200.2	1 703.6	614.1	2 317.6	11.8	73.5
1994	1 395.8	1 558.7	140.0	157.8	1 716.5	624.5	2 341.0	9.2	73.3
1995	1 440.0	1 607.7	120.9	136.3	1 744.0	627.2	2 371.1	7.8	73.6
1996									
October	1 422.4	1 604.1	116.4	134.9	1 738.9	662.9	2 401.8	7.8	72.4
November	1 416.6	1 589.1	117.7	134.0	1 723.1	681.4	2 404.6	7.8	71.7
December	1 451.3	1 625.7	121.3	142.1	1 767.8	639.5	2 407.3	8.0	73.4
1997									
January	1 437.6	1 605.6	133.2	151.6	1 757.3	651.9	2 409.2	8.6	72.9
February	1 419.3	1 588.4	142.7	161.6	1 750.0	661.1	2 411.1	9.2	72.6
March	1 434.1	1 603.9	126.3	147.2	1 751.1	661.9	2 413.0	8.4	72.6
April	1 421.2	1 610.1	120.9	139.1	1 749.3	666.3	2 415.6	8.0	72.4
May	1 408.0	1 597.3	127.6	143.3	1 740.7	677.4	2 418.1	8.2	72.0
June	1 416.4	1 598.9	116.8	129.1	1 728.1	692.7	2 420.7	7.5	71.4
July	1 422.3	1 600.4	130.3	145.4	1 745.8	677.8	2 423.6	8.3	72.0
August	1 390.3	1 567.6	120.3	135.2	1 702.8	723.7	2 426.5	7.9	70.2
September	1 434.3	1 613.3	126.1	147.6	1 760.9	668.5	2 429.3	8.4	72.5
October	1 428.1	1 595.3	121.3	138.9	1 734.2	698.1	2 432.3	8.0	71.3
November	1 431.3	1 615.2	119.0	138.1	1 753.3	681.9	2 435.2	7.9	72.0
December	1 456.8	1 637.6	116.8	135.1	1 772.7	665.4	2 438.1	7.6	72.7
FEMALES									
December									
1993	689.1	1 125.4	77.1	110.1	1 235.5	1 165.2	2 400.7	8.9	51.5
1994	712.6	1 167.7	73.6	111.1	1 278.8	1 147.5	2 426.3	8.7	52.7
1995	744.6	1 224.3	65.3	89.2	1 313.5	1 140.9	2 454.4	6.8	53.5
1996									
October	736.5	1 215.1	63.2	98.1	1 313.3	1 176.2	2 489.4	7.5	52.8
November	730.9	1 214.6	50.2	82.2	1 296.8	1 195.9	2 492.6	6.3	52.0
December	746.7	1 225.0	70.1	102.6	1 327.6	1 168.3	2 495.8	7.7	53.2
1997									
January	729.7	1 182.3	75.0	106.4	1 288.6	1 209.5	2 498.1	8.3	51.6
February	725.7	1 194.1	80.0	125.6	1 319.8	1 180.6	2 500.3	9.5	52.8
March	722.6	1 212.4	73.1	110.0	1 322.4	1 180.2	2 502.5	8.3	52.8
April	730.2	1 211.6	68.9	104.5	1 316.1	1 189.1	2 505.3	7.9	52.5
May	720.4	1 206.6	67.2	101.9	1 308.5	1 199.5	2 508.0	7.8	52.2
June	704.3	1 192.4	64.1	92.3	1 284.7	1 226.0	2 510.7	7.2	51.2
July	729.6	1 213.2	61.7	92.7	1 305.9	1 207.7	2 513.6	7.1	52.0
August	703.9	1 182.9	65.3	92.7	1 275.6	1 240.8	2 516.5	7.3	50.7
September	722.2	1 226.8	63.4	96.1	1 322.9	1 196.5	2 519.4	7.3	52.5
October	721.0	1 194.1	68.1	97.3	1 291.5	1 230.6	2 522.1	7.5	51.2
November	725.5	1 228.3	62.1	87.8	1 316.1	1 208.6	2 524.7	6.7	52.1
December	730.8	1 234.9	66.3	95.7	1 330.6	1 196.8	2 527.4	7.2	52.6

For footnotes see end of table.

4

LABOUR FORCE STATUS, NSW — ORIGINAL *continued*

Month	Employed		Unemployed		Labour force	Not in labour force	Civilian population aged 15 years and over	Unemployment rate(a)	Participation rate(b)
	Full-time workers	Total	Looking for full-time work	Total					
	'000	'000	'000	'000	'000	'000	'000	%	%
PERSONS									
December									
1993	2 046.0	2 628.8	260.6	310.3	2 939.0	1 779.3	4 718.3	10.6	62.3
1994	2 108.4	2 726.4	213.6	268.9	2 995.3	1 772.1	4 767.4	9.0	62.8
1995	2 184.7	2 832.0	186.2	225.5	3 057.5	1 768.0	4 825.5	7.4	63.4
1996									
October	2 158.9	2 819.2	179.6	233.0	3 052.2	1 839.1	4 891.3	7.6	62.4
November	2 147.5	2 803.7	167.9	216.2	3 019.9	1 877.3	4 897.2	7.2	61.7
December	2 197.9	2 850.6	191.4	244.7	3 095.4	1 807.8	4 903.1	7.9	63.1
1997									
January	2 167.3	2 787.9	208.1	258.0	3 045.9	1 861.4	4 907.3	8.5	62.1
February	2 145.0	2 782.5	222.7	287.2	3 069.7	1 841.7	4 911.4	9.4	62.5
March	2 156.7	2 816.3	199.4	257.1	3 073.4	1 842.1	4 915.5	8.4	62.5
April	2 151.5	2 821.7	189.8	243.6	3 065.4	1 855.5	4 920.8	7.9	62.3
May	2 128.4	2 804.0	194.9	245.3	3 049.2	1 876.9	4 926.1	8.0	61.9
June	2 120.8	2 791.3	181.0	221.4	3 012.8	1 918.7	4 931.4	7.3	61.1
July	2 151.9	2 813.6	192.1	238.1	3 051.7	1 885.5	4 937.2	7.8	61.8
August	2 094.3	2 750.5	185.6	228.0	2 978.4	1 964.5	4 942.9	7.7	60.3
September	2 156.5	2 840.0	189.5	243.7	3 083.8	1 865.0	4 948.7	7.9	62.3
October	2 149.1	2 789.4	189.3	236.2	3 025.7	1 928.7	4 954.3	7.8	61.1
November	2 156.7	2 843.5	181.1	225.9	3 069.4	1 890.5	4 959.9	7.4	61.9
December	2 187.6	2 872.6	183.1	230.8	3 103.3	1 862.2	4 965.6	7.4	62.5

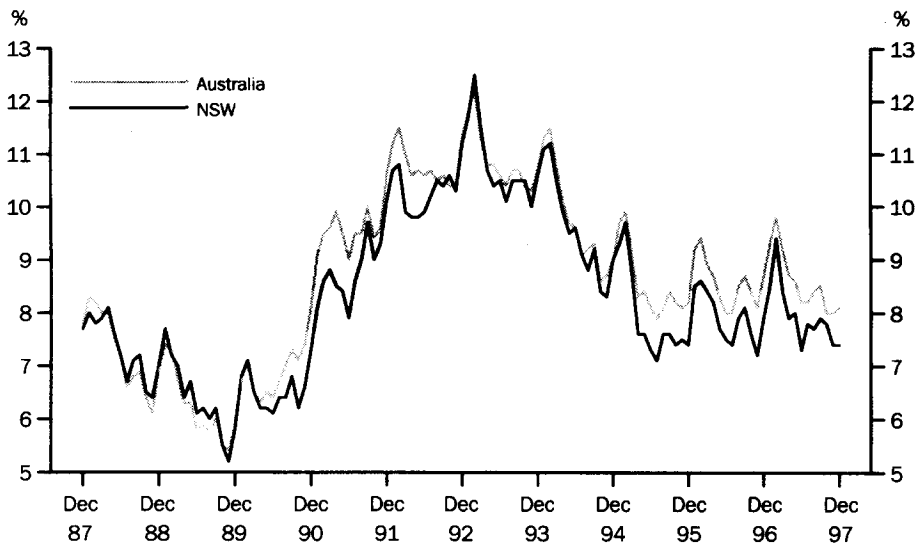
^a The number of unemployed in each group expressed as a percentage of the labour force in the same group.

^b The labour force in each group expressed as a percentage of the civilian population aged 15 and over in the same group.

Source: Labour Force, Australia, Preliminary (Cat. no. 6202.0)

5

UNEMPLOYMENT RATE — ORIGINAL



Source: Labour Force, Australia, Preliminary (Cat. no. 6202.0).

6

COAL, ELECTRICITY AND GAS PRODUCTION, NSW AND AUSTRALIA — ORIGINAL

Indicator	Unit	Latest period	New South Wales				Australia	
			Latest figure	Change from prior period	Change from same period prior year	Latest figure	Change from prior period	Change from same period prior year
				%	%		%	%
Raw coal won—								
Underground	'000 tonnes	Oct 97	4 179	-14.7	-24.5	5 541	-13.9	-18.1
Open cut	'000 tonnes	Oct 97	6 436	12.0	-2.0	15 243	8.7	1.3
Total	'000 tonnes	Oct 97	10 615	-0.3	-12.3	20 784	1.6	-4.7
Electricity	mill. kWh	Sep qtr 97	16 622	4.1	-0.1	45 521	6.1	4.1
Gas(a)	teraJ	Sep qtr 97	34 086	14.0	5.7	183 329	7.1	-0.2

^a Available for issue through mains. Includes ACT.

Source: Joint Coal Board, Manufacturing Production, Australia (Cat. no. 8301.0)

7

COAL, ELECTRICITY AND GAS PRODUCTION, NSW — ORIGINAL

Period	Raw coal won			Electricity	Gas(a)
	Underground	Open cut	Total		
	'000 tonnes	'000 tonnes	'000 tonnes	mill. kWh	teraJ
1994-95	48 702	59 079	107 781	60 016	104 881
1995-96	54 314	58 775	113 089	62 047	104 141
1996-97	54 642	69 037	123 679	62 788	109 284
1996					
August	4 486	5 284	9 770	n.a.	n.a.
September	4 872	5 154	10 026	n.a.	n.a.
October	5 534	6 569	12 103	—	—
November	4 524	5 200	9 724	15 052	24 402
December	3 859	4 830	8 689	—	—
1997					
January	3 972	5 797	9 769	—	—
February	3 830	5 583	9 413	15 127	22 738
March	4 088	5 663	9 751	—	—
April	4 803	6 626	11 429	—	—
May	5 183	6 626	11 809	15 973	29 907
June	4 717	5 785	10 502	—	—
July	6 489	6 970	13 459	—	—
August	5 439	6 075	11 514	16 622	34 086
September	4 898	5 745	10 643	—	—
October	4 179	6 436	10 615	n.a.	n.a.

^a Available for issue through mains. Includes ACT.

Source: Joint Coal Board, Manufacturing Production, Australia (Cat. no. 8301.0)

Indicator	Unit	Latest period	New South Wales			Australia		
			Latest figure	Change from prior period %	Change from same period prior year %	Latest figure	Change from prior period %	Change from same period prior year %
Number of dwelling units(a) (seasonally adjusted)—								
New houses	No.	Nov 97	2 400	-0.8	21.1	8 686	1.0	19.7
Total	No.	Nov 97	4 507	9.6	13.1	13 321	9.1	19.7
Value of new residential building (seasonally adjusted)								
	\$m	Nov 97	505.2	-1.3	28.5	1 393.1	6.7	22.6
Value of alterations and additions to residential building(b) (seasonally adjusted)								
	\$m	Nov 97	108.0	5.7	-14.5	222.3	-6.2	-2.0
Value of non-residential building(c) (original)								
	\$m	Nov 97	380.6	-26.8	-56.8	992.1	-19.8	-41.5
Value of all building (original)								
	\$m	Nov 97	1 028.0	-8.5	-28.1	2 610.5	-8.0	-15.1

^a Includes dwelling units approved as part of the construction of non-residential building and alterations and additions to existing buildings (including conversions to dwelling units).

^b Valued at \$10,000 or more. Includes conversions of existing buildings into residential buildings.

^c Valued at \$50,000 or more.

Source: Building Approvals, Australia (Cat. no. 8731.0)

9

BUILDING APPROVALS, NSW

Period	Number of dwelling units(a), seasonally adjusted				Value of building approvals			
	New houses		Total		Seasonally adjusted		Original	
	Private sector	Total	Private sector	Total	New residential building	Alterations and additions to residential building(b)	Non-residential building(c)	All building
	no.	no.	no.	no.	\$m	\$m	\$m	\$m
1994-95	3 733.4	10 211.0
1995-96	3 650.2	9 168.6
1996-97	5 169.1	11 357.5
1996								
September	2 085	2 095	2 977	3 061	335.7	84.9	468.4	926.3
October	1 918	1 937	3 585	3 781	383.8	87.7	749.8	1 232.2
November	1 979	1 982	3 736	3 984	393.2	126.3	880.8	1 430.6
December	2 299	2 321	3 700	3 957	407.1	89.3	509.2	949.8
1997								
January	2 148	2 154	3 967	4 191	442.2	100.0	413.0	883.8
February	2 045	2 089	4 072	4 308	479.4	93.0	241.5	734.7
March	1 805	1 825	3 849	3 995	375.9	96.8	202.4	648.7
April	2 445	2 470	4 203	4 326	505.6	91.2	307.3	847.3
May	2 961	2 980	4 390	4 442	527.9	91.9	260.5	971.3
June	2 112	2 119	4 219	4 389	436.9	125.7	353.0	903.0
July	2 095	2 109	3 687	3 744	355.3	92.7	584.9	1 156.7
August	2 236	2 241	4 695	4 862	633.6	101.5	710.5	1 405.9
September	2 143	2 147	3 454	3 567	401.2	92.3	396.4	958.0
October	2 411	2 420	4 081	4 111	511.7	102.3	520.3	1 123.1
November	2 390	2 400	4 466	4 507	505.2	108.0	380.6	1 028.0

^a Includes dwelling units approved as part of the construction of non-residential building and alterations and additions to existing buildings (including conversions to dwelling units).

^b Valued at \$10,000 or more. Includes conversions of existing buildings into residential buildings.

^c Valued at \$50,000 or more.

Source: Building Approvals, Australia (Cat. no. 8731.0)

10

TURNOVER OF RETAIL ESTABLISHMENTS(a), NSW AND AUSTRALIA — SEASONALLY ADJUSTED

Indicator	Unit	Latest period	New South Wales			Australia		
			Latest figure	Change from prior period %	Change from same period prior year %	Latest figure	Change from prior period %	Change from same period prior year %
Food retailing	\$m	Nov 97	1 536.7	1.3	5.6	4 542.0	1.0	5.7
Department stores	\$m	Nov 97	347.2	3.1	2.9	1 021.3	4.2	3.7
Clothing and soft good retailing	\$m	Nov 97	280.8	3.0	1.1	747.5	3.5	5.9
Household good retailing	\$m	Nov 97	398.3	-9.1	-9.7	1 309.1	-0.2	3.5
Recreational good retailing	\$m	Nov 97	216.2	-4.0	0.6	625.9	-4.2	6.2
Other retailing	\$m	Nov 97	414.8	2.7	10.7	1 132.9	0.4	10.0
Hospitality and services	\$m	Nov 97	767.4	0.9	4.9	1 862.4	0.2	5.9
Total value of retail sales	\$m	Nov 97	3 961.5	0.2	3.3	11 241.1	0.8	5.7

^a The figures shown are derived from a monthly survey of retail establishments. Excludes motor vehicle, boat and caravan dealers, service stations, smash repairers, tyre and battery retailers, bread and milk vendors, footwear repairers and electrical appliance repairers n.e.c. Retail establishments which do not have employees are excluded from the survey. Turnover includes retail sales, wholesale sales, takings from repairs, meals and hiring of goods; and commissions from agency activity (e.g. commissions received from collecting dry cleaning, selling lottery tickets etc.)

Source: Retail Trade, Australia (Cat. no. 8501.0).

11

TURNOVER OF RETAIL ESTABLISHMENTS(a), NSW — SEASONALLY ADJUSTED

Period	Food retailing	Department stores	Clothing and soft good retailing	Household good retailing	Recreational good retailing	Other retailing	Hospitality and services	Total
	\$m	\$m	\$m	\$m	\$m	\$m	\$m	\$m
1996								
September	1 441.0	324.7	284.3	456.3	217.0	368.6	747.8	3 839.7
October	1 442.7	321.2	279.9	456.9	212.2	381.4	742.2	3 836.4
November	1 455.3	337.5	277.8	441.3	215.0	374.8	731.6	3 833.3
December	1 437.5	339.6	288.1	452.2	224.4	376.7	743.4	3 861.8
1997								
January	1 450.0	334.7	285.5	439.8	220.1	371.2	735.1	3 836.4
February	1 458.0	342.2	277.9	474.6	219.2	374.2	739.9	3 885.9
March	1 487.8	329.5	267.4	445.2	214.8	378.0	732.7	3 855.4
April	1 455.1	314.7	271.6	440.6	219.6	378.3	727.8	3 807.8
May	1 481.5	327.9	283.2	452.9	221.2	384.7	741.0	3 892.4
June	1 464.5	314.2	274.8	455.6	223.7	389.0	765.4	3 887.2
July	1 512.4	364.6	279.9	479.1	214.1	400.8	748.4	3 999.2
August	1 505.0	328.0	276.3	477.3	211.4	385.4	763.9	3 947.3
September	1 537.5	358.4	275.1	464.8	229.6	382.0	765.1	4 012.4
October	1 516.8	336.6	272.7	438.1	225.2	403.7	760.3	3 953.4
November	1 536.7	347.2	280.8	398.3	216.2	414.8	767.4	3 961.5

^a The figures shown are derived from a monthly survey of retail establishments. Excludes motor vehicle, boat and caravan dealers, service stations, smash repairers, tyre and battery retailers, bread and milk vendors, footwear repairers and electrical appliance repairers n.e.c. Retail establishments which do not have employees are excluded from the survey. Turnover includes retail sales, wholesale sales, takings from repairs, meals and hiring of goods; and commissions from agency activity (e.g. commissions received from collecting dry cleaning, selling lottery tickets etc.)

Source: Retail Trade, Australia (Cat. no. 8501.0).

12

NEW MOTOR VEHICLE REGISTRATIONS(a), NSW AND AUSTRALIA — SEASONALLY ADJUSTED

Indicator	Unit	Latest period	New South Wales				Australia		
			Latest figure	Change from prior period %	Change from same period prior year %	Latest figure	Change from prior period %	Change from same period prior year %	
Passenger vehicles	no.	Nov 97	18 995	0.4	20.5	54 708	0.2	19.9	
Other vehicles (excluding motor cycles)	no.	Nov 97	2 513	-7.9	-0.6	8 700	-6.7	2.3	
Total registrations (excluding motor cycles)	no.	Nov 97	21 507	-0.7	17.6	63 408	-0.8	17.1	

^a Includes vehicles (other than those of the defence forces) owned by Government departments and authorities. Excludes mobile plant and equipment, tractors, trailers and non-motorised caravans.

Source: *New Motor Vehicle Registrations, Australia, Preliminary (Cat. no. 9301.0)*.

13

NEW MOTOR VEHICLE REGISTRATIONS(a), NSW — SEASONALLY ADJUSTED

Period	Passenger vehicles	Other vehicles	Total
	no.	(excluding motor cycles) no.	(excluding motor cycles) no.
1996			
September	15 171	2 685	17 856
October	16 042	2 590	18 632
November	15 759	2 529	18 288
December	15 169	2 604	17 773
1997			
January	17 239	2 656	19 895
February	16 927	2 894	19 820
March	16 761	2 837	19 598
April	17 194	2 637	19 831
May	16 924	2 770	19 694
June	17 978	2 728	20 706
July	17 377	2 763	20 141
August	16 977	2 732	19 709
September	18 454	2 711	21 165
October	18 920	2 729	21 650
November	18 995	2 513	21 507

^a Includes vehicles (other than those of the defence forces) owned by Government departments and authorities. Excludes mobile plant and equipment, tractors, trailers and non-motorised caravans.

Source: *New Motor Vehicle Registrations, Australia, Preliminary (Cat. no. 9301.0)*.

14

LICENSED HOTELS, MOTELS ETC., NSW AND AUSTRALIA — ORIGINAL

Indicator	Unit	Latest period	New South Wales				Australia	
			Latest figure	Change from	Change from	Latest figure	Change from	Change from
				prior period	same period		prior period	same period
			%	%		%	%	
Room nights	'000	Sept qtr	3 113.8	5.7	-0.3	9 521.2	9.4	2.4
Room occupancy rate	%	Sept qtr	57.5	2.7	-2.7	58.0	6.2	-1.4
Takings	\$'000	Sept qtr	325 246	6.4	3.5	949 679	11.3	5.9

Source: Tourist Accommodation, Australia (Cat. no. 8635.0)

15

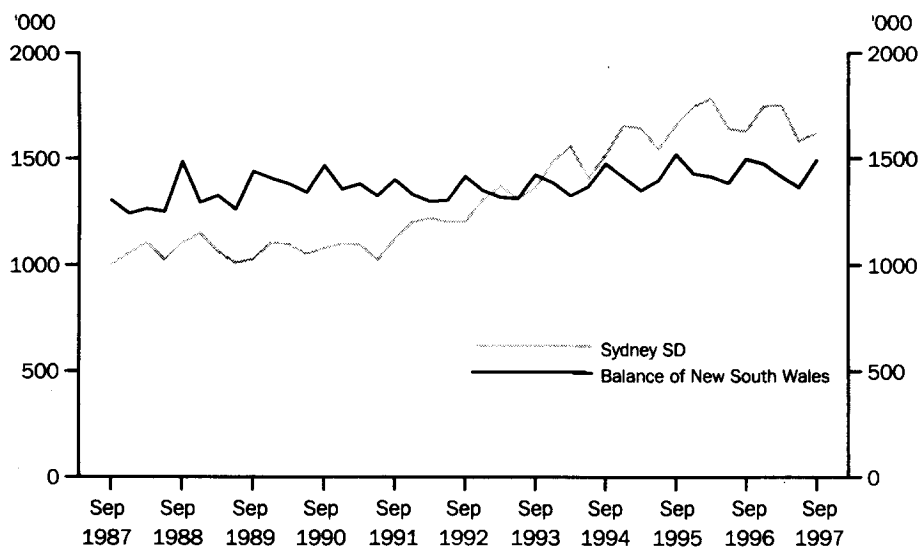
LICENSED HOTELS, MOTELS ETC., SYDNEY AND NSW — ORIGINAL

Period	Sydney			New South Wales		
	Room nights	Room occupancy rate	Takings	Room nights	Room occupancy rate	Takings
	'000	%	\$'000	'000	%	\$'000
1996						
March qtr	1 783.9	76.2	221 746	3 198.4	61.1	316 626
June qtr	1 640.4	69.5	205 884	3 024.3	57.4	296 797
September qtr	1 627.4	69.4	205 409	3 123.4	59.1	314 270
December qtr	1 747.3	74.7	232 355	3 221.7	60.9	333 494
1997						
March qtr	1 753.1	76.2	236 756	3 168.7	60.9	337 189
June qtr	1 581.0	67.9	214 116	2 945.2	56.0	305 726
September qtr	1 622.8	67.2	214 412	3 113.8	57.5	325 246

Source: Tourist Accommodation, NSW (Cat. no. 8635.1)

16

LICENSED HOTELS, MOTELS ETC., QUARTERLY ROOM NIGHTS OCCUPIED — ORIGINAL



Source: Tourist Accommodation, NSW (Cat. no. 8635.1)

17

CONSUMER AND PRODUCER PRICE INDEXES, NSW AND AUSTRALIA

Indicator	Unit	Latest period	Latest figure	New South Wales		Australia(a)		
				Change from prior period %	Change from same period prior year %	Latest figure	Change from prior period %	Change from same period prior year %
Consumer Price Index (all groups)	1989-90 = 100.0	Dec qtr 97	120.1	0.3	-0.2	120.0	0.3	-0.2
Price index of materials used in house building (all groups)	1989-90 = 100.0	Dec qtr 97	119.4	1.4	3.1	117.9	0.5	1.8
Price index of materials used in building other than house building (all groups)	1989-90 = 100.0	Dec qtr 97	114.2	0.0	1.4	114.0	0.0	1.1

^a For the Consumer Price Index this is the weighted average of eight capital cities and for the other two indexes, the weighted average of the six State capital cities.

Source: Consumer Price Index (Cat. no. 6401.0), Price Index of Materials Used in Building Other Than House Building, Six State Capital Cities (Cat. no. 6407.0), Price Index of Materials Used in House Building, Six State Capital Cities (Cat. no. 6408.0)

18

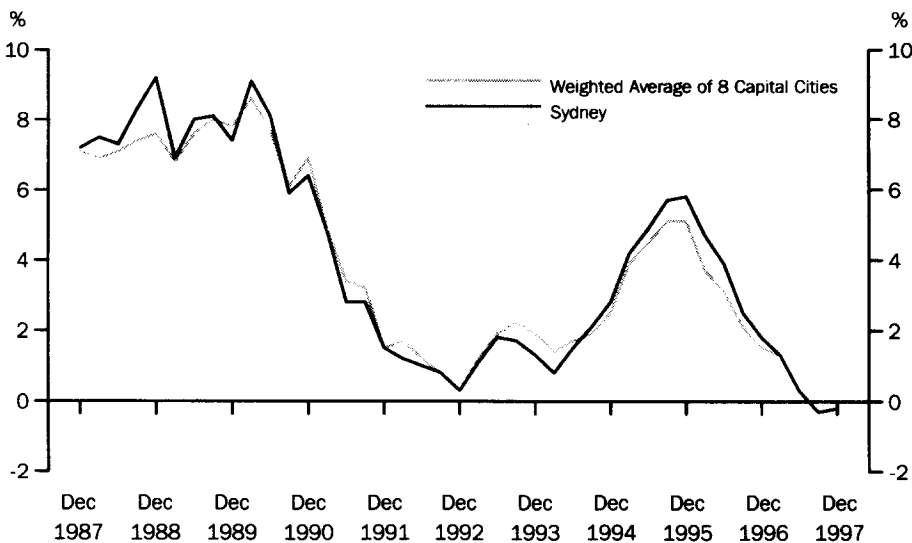
CONSUMER AND PRODUCER PRICE INDEXES, NSW

Period	Consumer Price Index, all groups	Price Index of materials used in house building, all groups	Price Index of materials used in building other than house building, all groups
	1989-90 = 100.0	1989-90 = 100.0	1989-90 = 100.0
1996			
June qtr	119.9	116.2	112.5
September qtr	120.2	115.9	112.5
December qtr	120.4	115.8	112.6
1997			
March qtr	120.6	116.0	113.2
June qtr	120.2	117.3	113.9
September qtr	119.8	117.8	114.2
December qtr	120.1	119.4	114.2

Source: Consumer Price Index (Cat. no. 6401.0), Price index of Materials Used in Building Other Than House Building, Six State Capital Cities (Cat. no. 6407.0), Price Index of Materials Used in House Building, Six State Capital Cities (Cat. no. 6408.0).

19

CONSUMER PRICE INDEX, ANNUAL RATE OF CHANGE



Source: Consumer Price Index (Cat. no. 6401.0)

Indicator	Unit	Latest period	Latest figure	New South Wales		Australia		
				Change from prior period %	Change from same period prior year %	Latest figure	Change from prior period %	Change from same period prior year %
Lending commitments for the construction or purchase of dwellings—								
Construction of dwellings	\$m	Nov 97	201.1	-10.2	20.3	655.2	-9.3	27.9
Purchase of newly erected dwellings	\$m	Nov 97	110.0	-0.7	6.1	242.6	-7.7	7.1
Purchase of established dwellings(a)	\$m	Nov 97	1 198.4	-4.3	13.0	3 551.3	-5.8	9.6
Refinancing of existing dwellings	\$m	Nov 97	261.8	-13.4	-7.7	738.9	-9.9	2.7
Lending commitments for alterations and additions	\$m	Nov 97	97.9	-11.1	9.8	234.7	-11.3	2.2
Total lending commitments to individuals for housing(b)	\$m	Nov 97	1 771.4	-6.3	9.7	4 449.1	-6.4	10.5
Total lending commitments to individuals for housing (seasonally adjusted)(b)	\$m	Nov 97	1 804.5	-4.2	13.1	4 533.7	-2.3	14.9

^a Excludes refinancing.

^b Excludes alterations and additions.

Source: Housing Finance for Owner Occupation, Australia (Cat. no. 5609.0)

Lending commitments for the construction or purchase of dwellings

Period	Lending commitments for the construction or purchase of dwellings				Lending commitments for alterations and additions	Total lending commitments to individuals for housing(b)	Total lending commitments to individuals for housing (seasonally adjusted)(b)
	Construction of dwellings	Purchase of newly erected dwellings	Purchase of established dwellings(a)	Refinancing of existing dwellings			
	\$m	\$m	\$m	\$m	\$m	\$m	\$m
1993-94	2 151.4	838.5	10 911.6	2 337.2	1 078.2	16 238.7	..
1994-95	2 162.6	819.8	9 952.4	2 381.9	1 242.0	15 316.7	..
1995-96	1 894.7	897.9	10 145.3	2 929.8	1 261.8	15 867.7	..
1996							
September	160.7	97.3	908.3	407.6	108.8	1 573.9	1 579.1
October	163.2	97.3	995.2	312.2	112.3	1 567.9	1 575.1
November	167.2	103.7	1 060.5	283.6	89.1	1 615.0	1 594.9
December	142.7	81.5	1 000.9	265.8	84.2	1 491.0	1 665.3
1997							
January	147.8	93.8	948.0	304.9	83.9	1 494.5	1 940.2
February	175.6	100.1	981.9	297.5	92.9	1 555.1	1 591.4
March	187.5	106.3	1 121.1	328.4	103.8	1 743.3	1 715.8
April	212.2	116.6	1 231.9	371.7	108.5	1 932.3	1 792.4
May	221.3	121.3	1 282.3	316.2	99.7	1 941.1	1 778.7
June	193.0	120.8	1 122.6	327.5	89.9	1 764.0	1 735.7
July	220.8	116.8	1 218.6	321.5	93.1	1 877.8	1 707.7
August	213.6	114.8	1 154.9	310.7	90.3	1 794.1	1 824.0
September	236.2	116.0	1 210.2	322.4	102.7	1 884.7	1 856.1
October	224.0	110.9	1 253.3	302.3	110.1	1 890.5	1 884.3
November	201.1	110.0	1 198.4	261.8	97.9	1 771.4	1 804.5

^a Excludes refinancing.

^b Excludes alterations and additions.

Source: Housing Finance for Owner Occupation, Australia (Cat. no. 5609.0)

Item	Actual 1995-96 \$m	Actual 1996-97 \$m	Estimates 1997-98 \$m	July-September	
				1996-97 \$m	1997-98 \$m
RECEIPTS					
Current receipts					
Taxes, fees and fines					
Stamp duties	2 630	3 193	3 373	761	941
Payroll tax	2 876	3 161	3 338	761	845
Land tax	575	641	786	43	55
Motor vehicle tax	937	903	930	226	238
Gaming and betting	1 179	1 209	1 392	304	327
Licences	1 729	1 850	r1979	353	126
Other	943	1 000	r1114	239	372
Land transactions and royalties	246	243	238	58	66
Income from Non Budget Sector Enterprises	1 290	1 436	1 341	459	527
Commonwealth General Purpose Recurrent Grants	4 517	4 673	r4900	1 175	1 189
less—State Fiscal Contribution	—	210	216	52	57
Commonwealth Specific Purpose Recurrent Grants	2 757	2 944	r2962	597	701
Other	729	599	626	168	90
<i>Total current receipts</i>	20 408	21 642	22 763	5 092	5 420
Capital receipts					
Commonwealth General Purpose Capital Grants	—	—	—	—	—
Commonwealth Specific Purpose Capital Grants	867	854	854	72	91
Other	11	17	228	1	75
<i>Total capital receipts</i>	877	872	1 081	73	166
Total current and capital receipts	21 285	22 514	23 844	5 165	5 586
EXPENDITURE					
Current expenditure					
Departmental payments					
Services					
Health	5 116	5 381	5 585	1 365	1 336
Education (a)	4 641	4 928	5 174	1 166	1 157
Law and order (b)	1 247	1 679	1 711	384	376
Community Services	989	1 113	1 155	260	264
Other	3 944	4 057	r4192	850	1 098
Redundancies	17	22	38	2	5
Subsidies to Non Budget agencies					
Services	726	1 073	r866	140	205
Redundancies	66	33	63	16	26
Interest payments	1 683	1 399	1 527	299	350
Superannuation	1 077	1 402	1 451	294	479
Treasurer's advance (c)	—	—	r100	—	—
less—User charges	1 286	1 349	1 347	299	286
<i>Total current expenditure</i>	18 220	19 739	20 516	4 478	5 011
Capital expenditure					
Capital works	1 940	2 315	r2665	367	428
Capital grants	1 483	1 109	1 240	282	244
Advances made	65	69	r15	27	10
less—Advances repaid	1 877	657	215	-1	46
less—Asset sales	160	247	322	38	94
<i>Total capital expenditure</i>	1 449	2 589	3 383	638	543
Total current and capital expenditure	19 669	22 328	23 899	5 116	5 554
SURPLUS OR DEFICIT (-)					
Current account	2 188	1 903	2 246	614	409
Capital account	-572	-1 717	-2 302	-565	-377
<i>Total result surplus/deficit</i>	1 617	186	-56	49	32

^a Includes Department of Training and Education Co-ordination, Department of School Education, Office of the Board of Studies and TAFE.

^b Includes Attorney Generals Department, Department of Corrective Services and Police Services.

^c Expenditure from the Treasurer's Advance is included in the relevant current payments figures.

Source: Financial Statement released by NSW Treasury. Figures may differ from data published in annual ABS publications.

23

ACTUAL PRIVATE NEW FIXED CAPITAL EXPENDITURE, NSW AND AUSTRALIA — TREND ESTIMATES

Indicator	Unit	Latest period	Latest figure	New South Wales		Latest figure	Australia	
				Change from prior period %	Change from same period prior year %		Change from prior period %	Change from same period prior year %
Type of asset—								
New buildings and structures	\$m	Sept qtr	985	-6.8	-7.1	3 178	-8.5	-12.2
Equipment, plant and machinery	\$m	Sept qtr	2 440	3.1	1.8	7 953	3.3	8.7
Total	\$m	Sept qtr	3 425	0	-0.9	11 132	-0.4	1.8

Source: State Estimates of Private New Capital Expenditure (Cat. no. 5646.0)

24

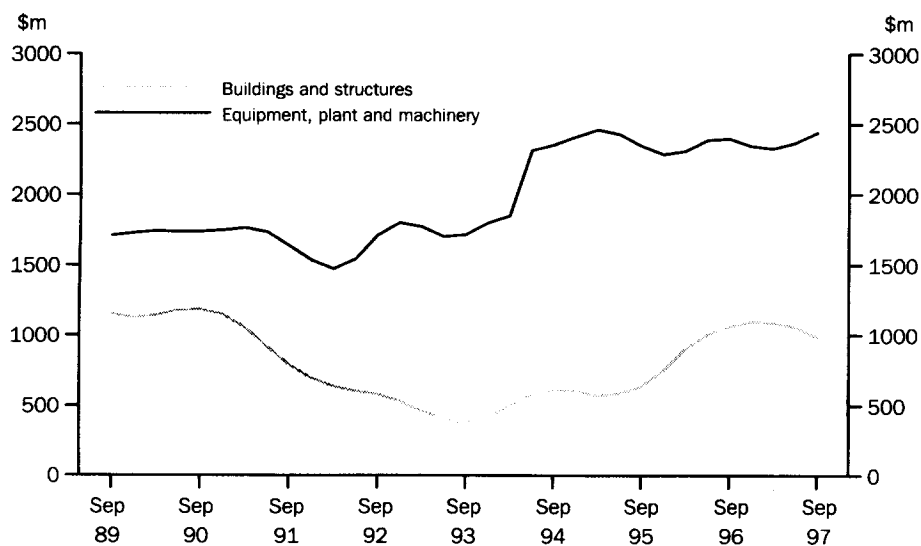
ACTUAL PRIVATE NEW FIXED CAPITAL EXPENDITURE, NSW — TREND ESTIMATES

Period	Type of asset		
	New buildings and structures \$m	Equipment, plant and machinery \$m	Total \$m
1996			
June qtr	1 002	2 386	3 388
September qtr	1 060	2 397	3 457
December qtr	1 095	2 344	3 438
1997			
March qtr	1 087	2 326	3 412
June qtr	1 057	2 367	3 424
September qtr	985	2 440	3 425

Source: State Estimates of New Capital Expenditure (Cat. no. 5646.0)

25

ACTUAL PRIVATE NEW FIXED CAPITAL EXPENDITURE — TREND ESTIMATES, NSW



Source: State Estimates of New Capital Expenditure (5646.0)

Indicator	Unit	Latest period	New South Wales				Australia		
			Latest figure	Change	Change	Latest figure	Change	Change	
				from prior period	from same period prior year		from prior period	from same period prior year	
%	%	%	%						
Overseas imports into NSW	\$m	Nov 97	3 105	-8.4	7.9	7 192	-9.4	9.5	
Total overseas exports(b)	\$m	Nov 97	1 736	2.8	17.7	7 333	1.2	20.6	
Exports of—									
Meat and meat preparations	\$m	Nov 97	86	11.9	11.8	323	-5.3	16.5	
Cereals and cereal preparations	\$m	Nov 97	148	56.7	117.5	438	13.9	25.7	
Wool and other animal hair	\$m	Nov 97	128	7.7	46.9	393	4.1	17.6	
Coke, coal and briquettes	\$m	Nov 97	327	8.2	13.1	783	5.2	18.2	
Iron and steel	\$m	Nov 97	102	-17.3	31.7	159	-4.2	21.9	
Aluminium	\$m	Nov 97	99	1.2	33.5	313	32.5	63.8	
Office machines and parts	\$m	Nov 97	49	9.3	-12.5	770	7.7	-3.9	

^a Figures shown are Free On Board (FOB) values.

^b Excludes re-exported goods. State of origin is defined as the State in which the final stage of production or manufacture occurs.

Source: International Trade, Australia: FASTTRACCS Service (Cat. no. 5460.0).

Period	Overseas exports of selected commodities(b)								
	Overseas imports into NSW	Total overseas exports(b)	Meat and meat preparations	Cereals and cereal preparations	Wool and other animal hair	Coke, coal and briquettes	Iron and steel	Aluminium	Office machines and parts
	\$m	\$m	\$m	\$m	\$m	\$m	\$m	\$m	\$m
1994-95	33 280	15 201	885	458	1 035	2 801	913	1 018	829
1995-96	34 891	16 684	794	822	720	3 338	1 037	1 111	638
1996-97	r34204	r17726	784	1 540	859	3 426	968	993	r535
1996									
September	2 813	1 532	61	135	68	285	101	85	51
October	r3025	1 406	64	63	82	292	66	75	47
November	2 879	1 474	77	68	87	289	77	74	56
December	2 798	1 494	63	125	86	279	65	77	55
1997									
January	2 631	1 326	54	120	64	343	87	81	35
February	2 549	1 383	65	163	59	277	81	86	41
March	2 649	1 527	70	149	100	261	80	95	50
April	2 939	1 445	76	137	62	286	92	88	31
May	r2788	1 717	75	197	73	289	112	99	40
June	3 182	r1552	68	204	61	270	57	73	r41
July	3 222	r1746	74	145	104	333	65	97	45
August	r3003	r1761	71	185	79	317	r93	r116	44
September	r3218	r1664	r76	157	r102	r350	59	r73	48
October	r3388	r1688	r77	r95	r119	r302	123	r98	45
November	3 105	1 736	86	148	128	327	102	99	49

^a Figures shown are Free On Board (FOB) values.

^b Excludes re-exported goods. State of origin is defined as the State in which the final stage of production or manufacture occurs.

Source: International Trade, Australia: FASTTRACCS Service (Cat. no. 5460.0).



FOR MORE INFORMATION . . .

For more information . . .

The ABS publishes a wide range of statistics and other information on Australia's economic and social conditions. Details of what is available in various publications and other products can be found in the ABS Catalogue of Publications and Products available from all ABS Offices.

ABS Products and Services

Many standard products are available from ABS bookshops located in each State and Territory. In addition to these products, information tailored to the needs of clients can be obtained on a wide range of media by contacting your nearest ABS Office. The ABS also provides a Subscription Service for standard products and some tailored information services.

National Dial-a-Statistic Line

0055 86 400

Steadycom P/L: premium rate 25c/20 secs.

This number gives 24-hour access, 365 days a year, for a range of important economic statistics including the CPI.

Internet

<http://www.abs.gov.au>

A wide range of ABS information is available via the Internet, with basic statistics available for each State, Territory and Australia. We also have Key National Indicators, ABS product release details and other information of general interest.

Sales and Inquiries

client.services@abs.gov.au

National Mail Order Service	(02) 6252 5249
Subscription Service	1300 366 323

	Information Inquiries	Bookshop Sales
CANBERRA	(02) 6252 6627	(02) 6207 0326
SYDNEY	(02) 9268 4611	(02) 9268 4620
MELBOURNE	(03) 9615 7755	(03) 9615 7755
BRISBANE	(07) 3222 6351	(07) 3222 6350
PERTH	(08) 9360 5140	(08) 9360 5307
ADELAIDE	(08) 8237 7100	(08) 8237 7582
HOBART	(03) 6222 5800	(03) 6222 5800
DARWIN	(08) 8943 2111	(08) 8943 2111



Client Services, ABS, PO Box 10, Belconnen ACT 2616



2130710002983

ISSN 1031-8534

RRP \$16.00

ABS Catalogue No. 1307.1 Economic Indicators, New South Wales February 1998